

Cell Morphology

Sirikwan Dokuta

Medical Technologist

18 Sep 2024

Normal Cell Morphology

Blood Cells



Monocyte



Lymphocyte



Neutrophil



Eosinophil



Basophil



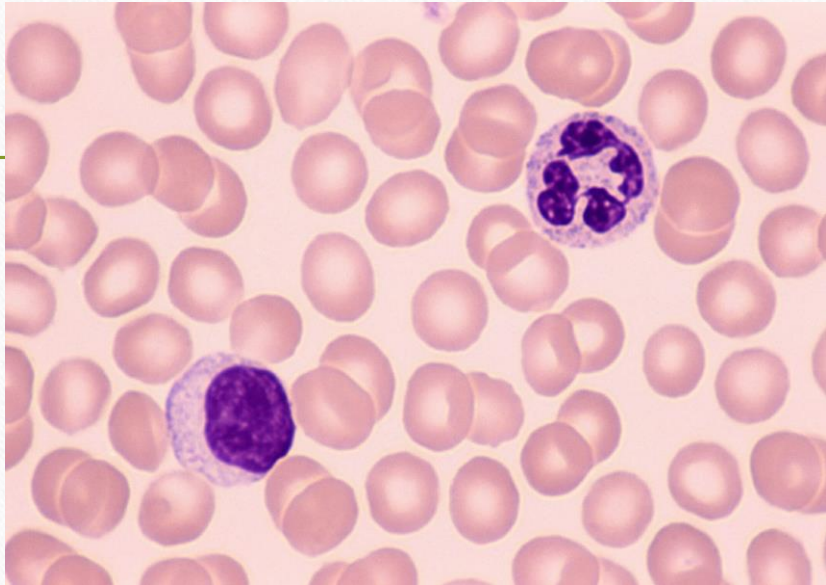
Macrophage



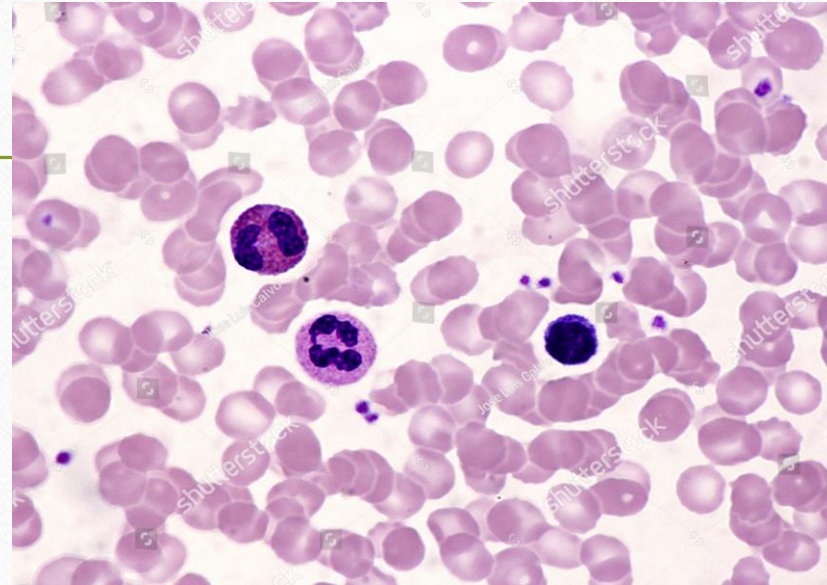
Erythrocyte



Platelets









Lymphocyte, Neutrophil, Normal RBC









Neutrophil, Eosinophil, Basophil, Platelet

Abnormal Cell Morphology

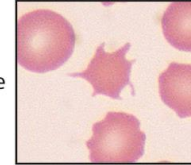
| RED CELL TYPE | | Changes associated with... |
|---|---|--|
|  | Normal | Normal |
|  | Acanthocytes (spur cells) | Hepatic Lipidosis, Hemangiosarcoma |
|  | Echinocyte (crenation, burr cells) | Sample Artifact, Renal Disease, Lymphosarcoma |
|  | Spherocyte | Lack Central Pallor, Hemolytic Anemia, Transfusion Mismatch |
|  | Keratocyte (helmet cells, blister cells) | Hemangiosarcoma, Neoplasia, Glomerulonephritis, Liver Disease |
|  | Schistocyte | DIC, Hemangiosarcoma, Iron Deficiency |

Abnormal Cell Morphology

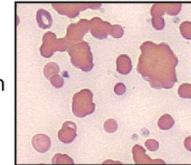
| RED CELL TYPE | | Changes associated with... |
|---|-------------------------|---|
|  | Basophilic Stippling | Residual RNA, Response to Anemia, Lead Poisoning |
|  | Howell-Jolly Bodies | Nuclear Remnants, Response to Anemia |
|  | Heinz Bodies | Denatured Hemoglobin, Lymphosarcoma, Hyperthyroidism, Diabetes Mellitus and even Normal in Cats |
|  | Macrocyte | Young Erythrocytes, Associated with Regenerative Anemia |
|  | Nucleated Erythrocytes | Response to Anemia |
|  | Codocyte (target cells) | Liver Disease, Hypothyroidism |

Abnormal Cell Morphology

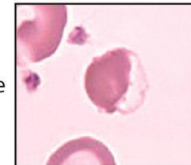
Acanthocyte



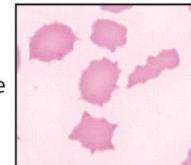
Agglutination



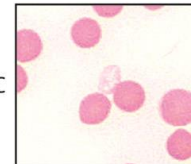
Eccentrocyte



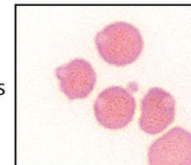
Elliptocyte



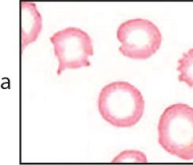
Ghost RBC



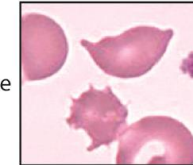
Heinz bodies



Hypochromasia



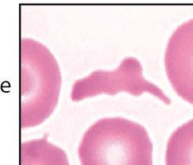
Keratocyte



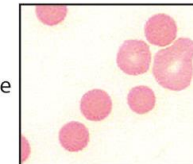
Rouleaux



Schistocyte



Spherocyte



Siderocyte

