



Morphology Quiz Time

Sunisa Butphet
25 Sep 2024

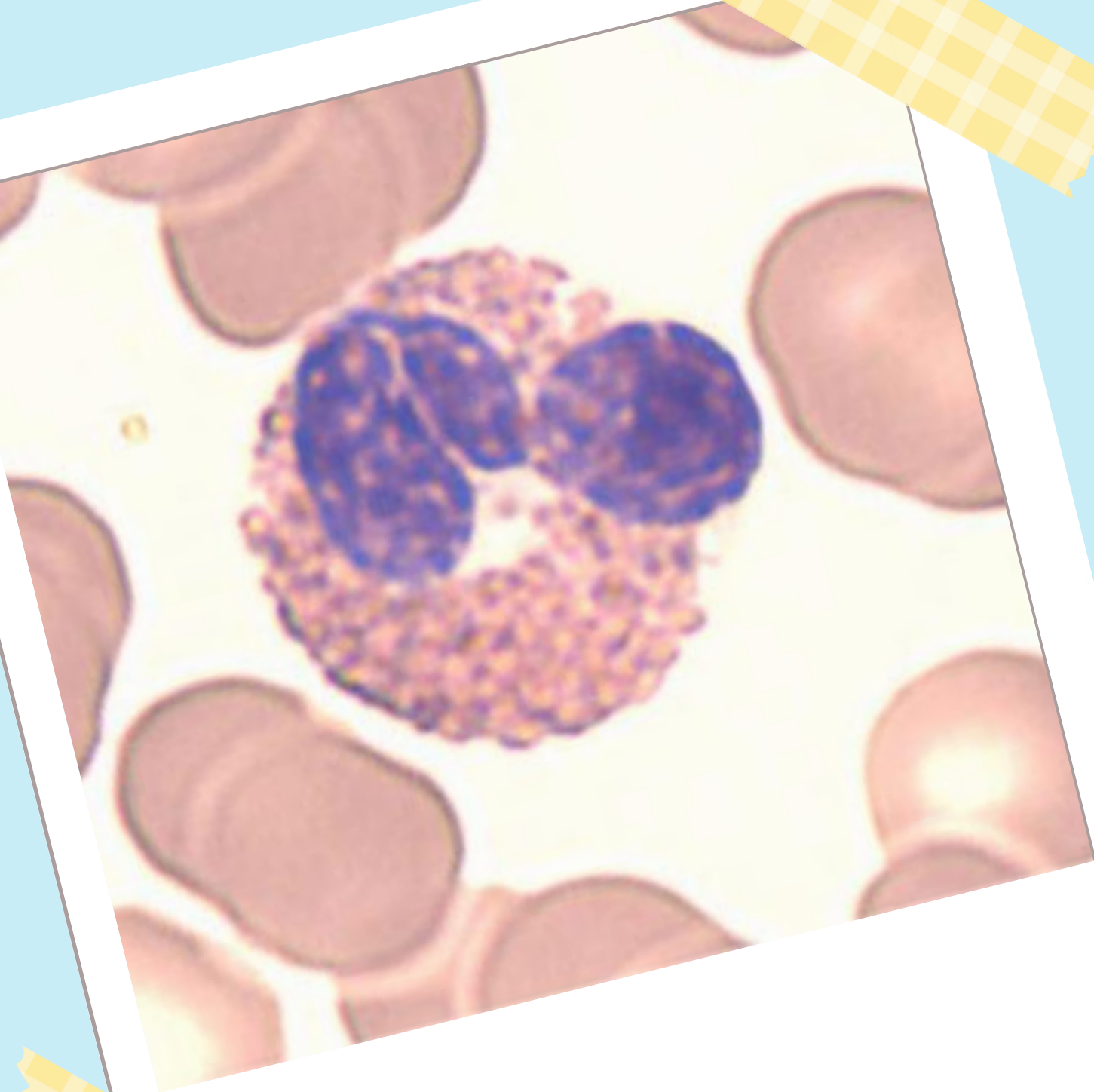


1. Identify the cell

- | | |
|---------------------|---------------------|
| A Lymphocyte | C Basophil |
| B Monocyte | D Neutrophil |



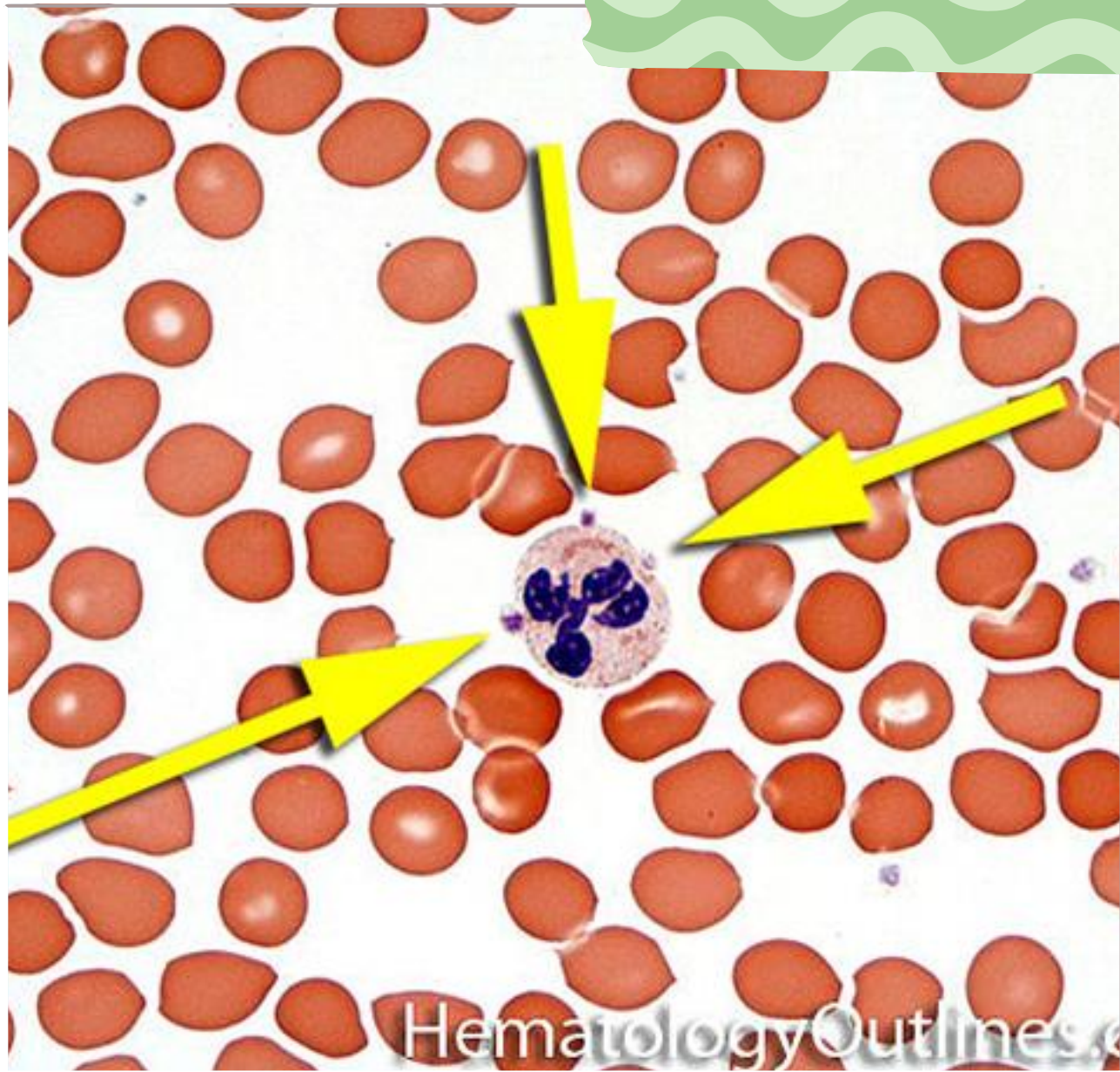
2. Name a condition in which these cells will be elevated



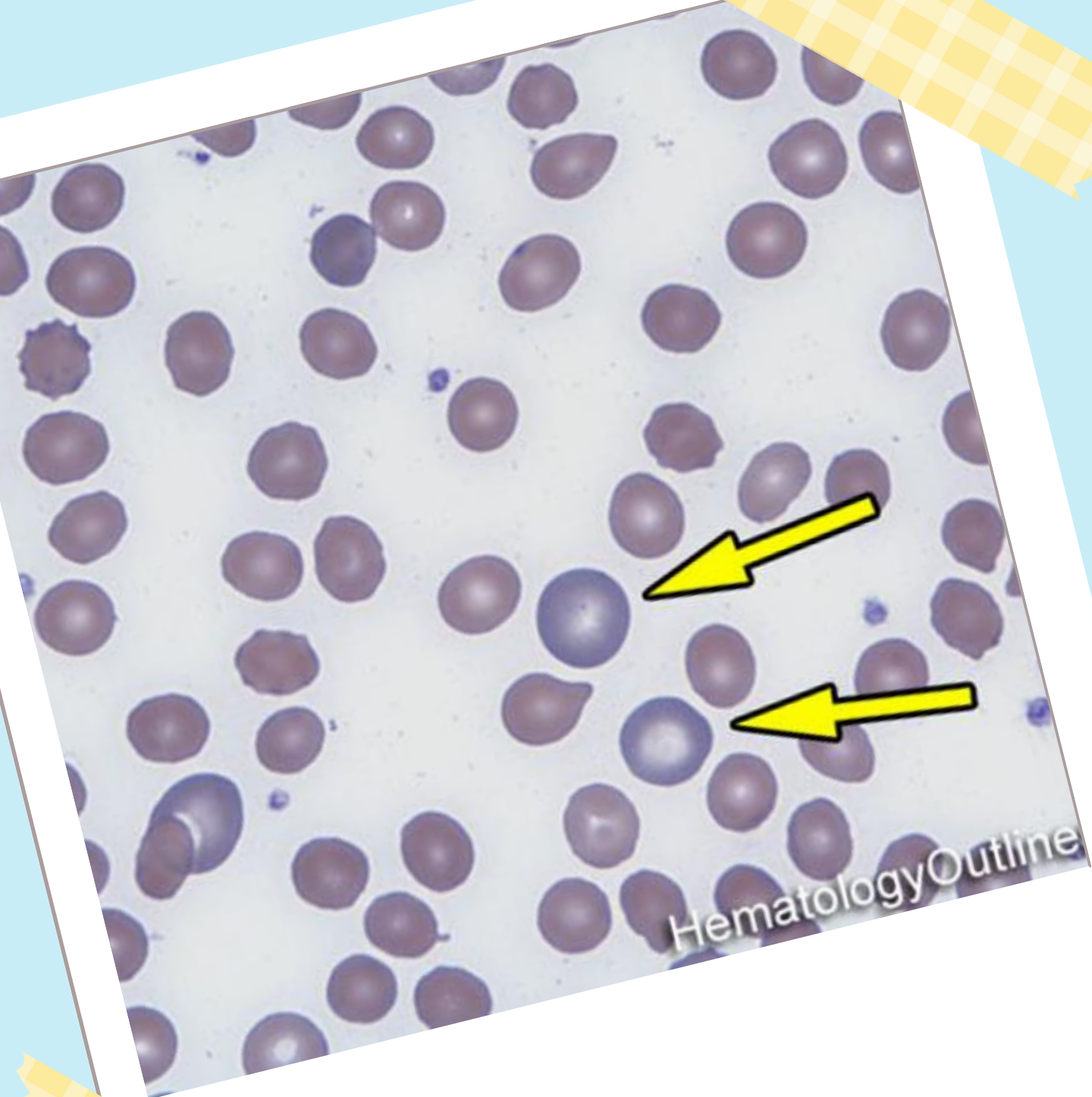
- A Bacterial infection
- B Viral infection
- C Parasitic infection
- D Anemia



3. Identify the cell



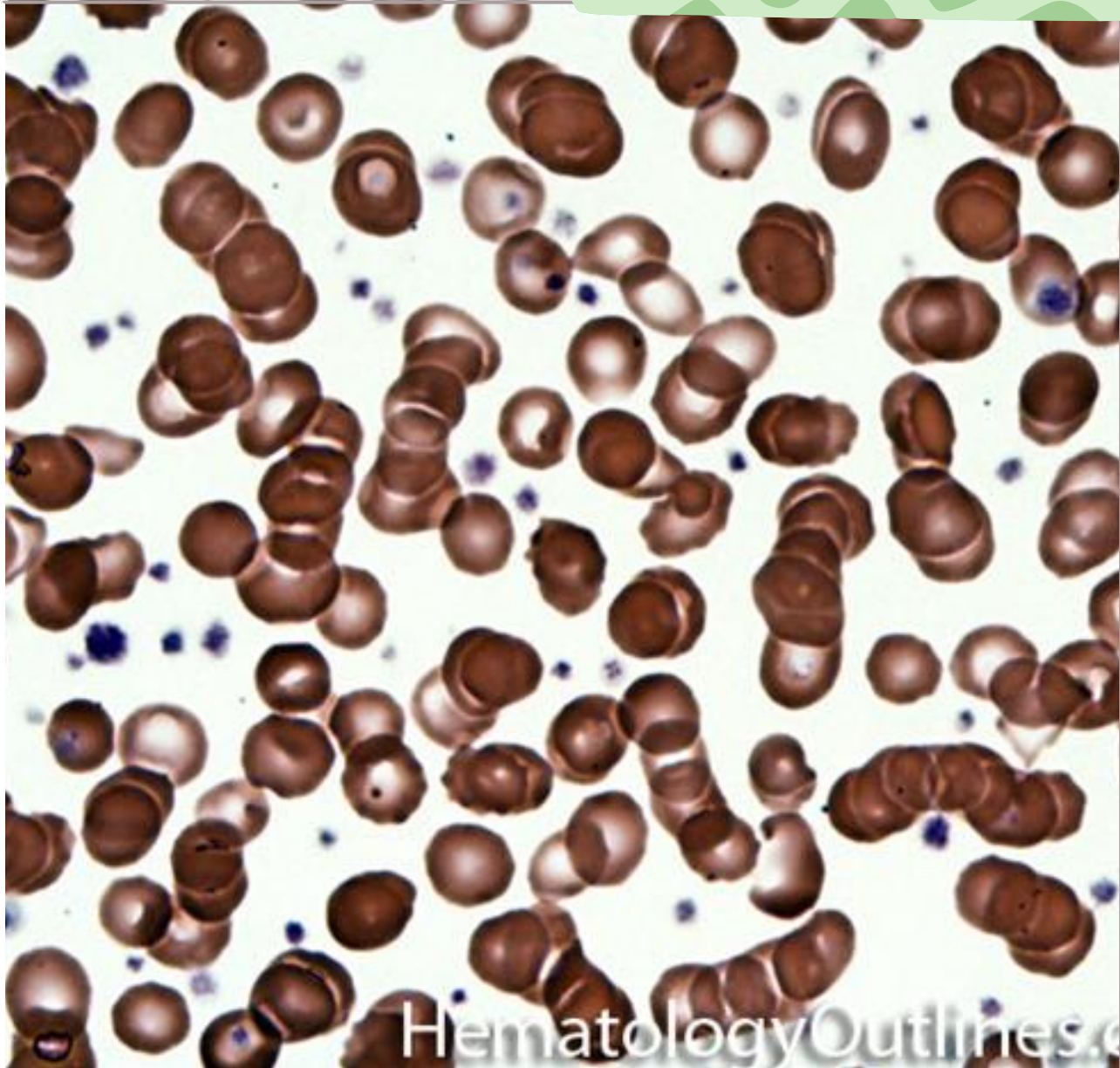
- A** Polychromatophilic RBC
- B** Pappenheimers Bodies
- C** Hypersegmented Neutrophil
- D** Platelett Satellitosis



4. Identify the cell

- A** Lymphocyte
- B** Polychromatophilic RBC
- C** Infectious Malaria
- D** Pseudo Pelger Huet Neutrophil

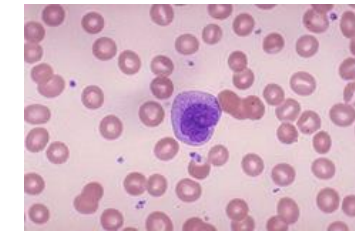
5. Identify the cells



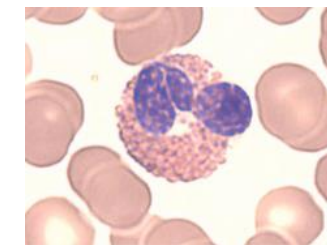
- A** Schistocyte Fragmented RBC
- B** Stomatocyte
- C** Rouleaux
- D** RBC Agglutination

Answer Key

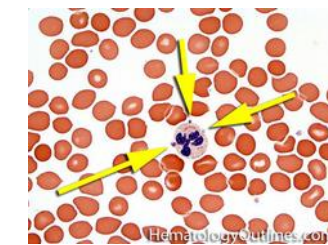
Question 1: **B** Monocyte



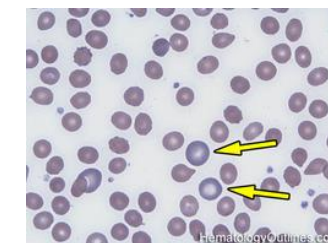
Question 2: **C** Parasitic infection



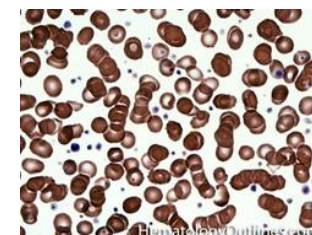
Question 3: **D** Platelett Satellitosis



Question 4: **B** Polychromatophilic RBC



Question 5: **C** Rouleaux



Thanks!

