



Quiz Cell Morphology

Panudda
Sothanapaisan

CL Riher

20 NOV 2024

Quiz : 1

WHAT IS IT?

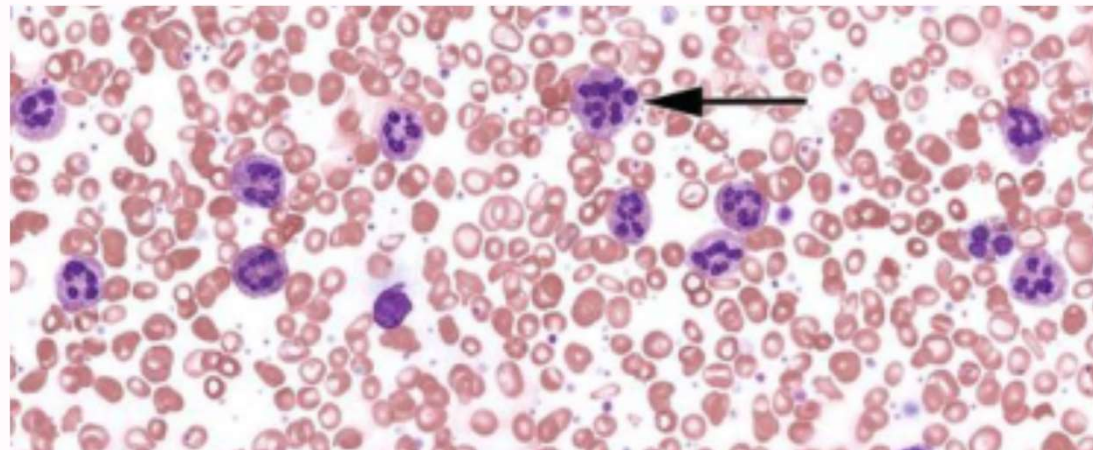
 Please Select

A: Neutrophil with toxic

B: Neutrophil
Hypersegmented

C: Neutrophil

D: Band Form



Quiz : 2

WHAT IS IT?



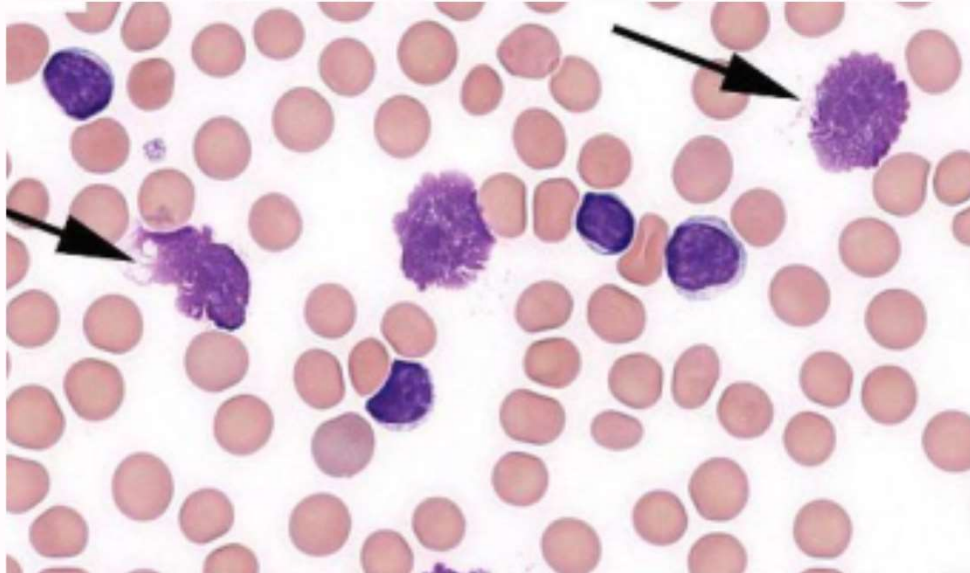
Please Select

A: Lymphocyte

B: Plasma Cell

C: Hairy Cell

D: Smudgy cell



Quiz : 3

WHAT IS IT?



Please Select

- A: Lymphocyte
- B: Lymphoblast
- C: Nucleated RBC
- D: Promyelocyte



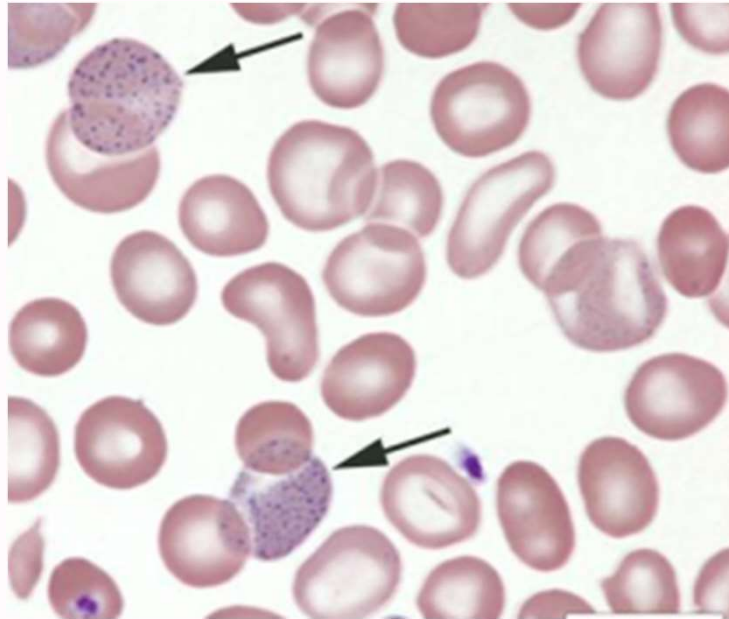
Quiz : 4

WHAT IS IT?



Please Select

- A: Malaria
- B: Basophillic Stipping
- C: Giant Platelet
- D: Howell-Jolly bodies



Quiz : 5

WHAT IS IT?



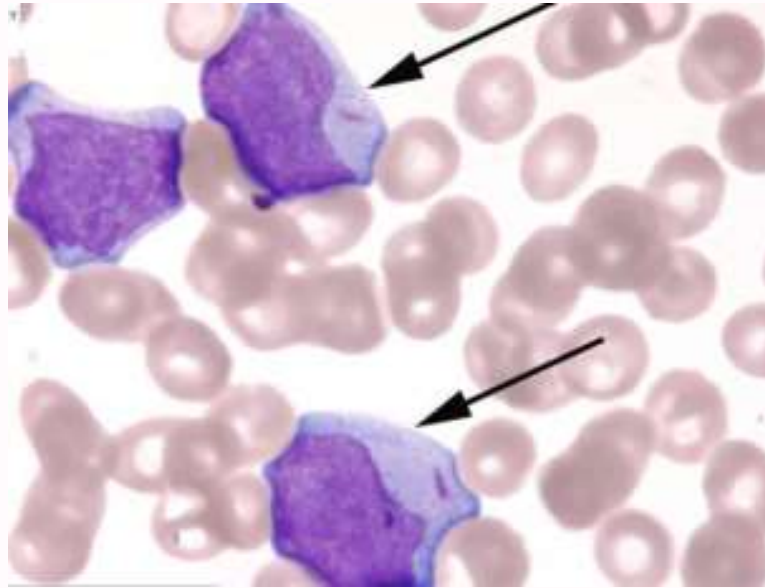
Please Select

A: Atypical Lymphocyte

B: Myeloblasts

C: Metamyelocyte

D: Monocyte



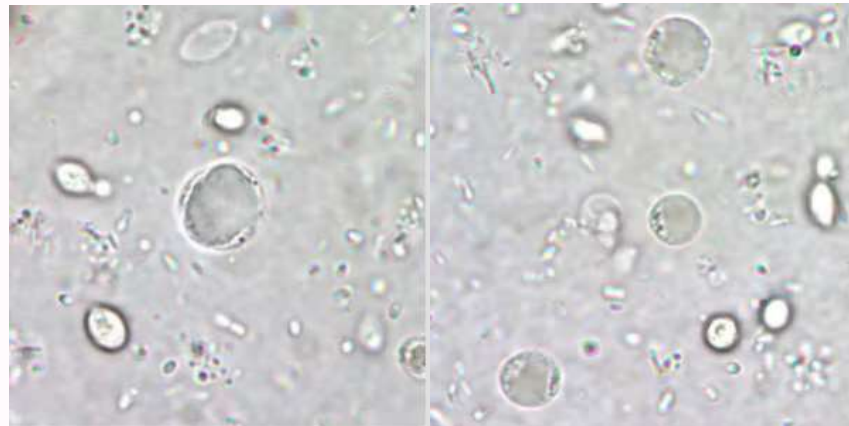


Parasite

Quiz : 1 WHAT IS IT?

 Please Select

- A: Blastocystis sp.
- B: Endolimax nana
- C. Escherichia coli
- D. Entamoeba histolytica



Quiz :2

WHAT IS IT?

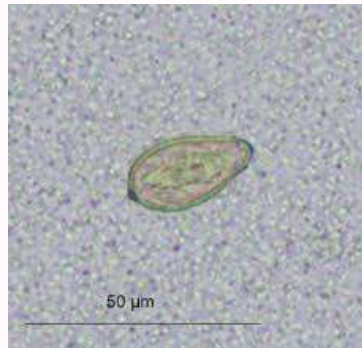
Please Select

A: Grain (Artifect)

B: Giardia lamblia

C: Opisthorchis viverrini

D: Trichuris trichiura



Quiz : 3

WHAT IS IT?

 Please Select

- A: *Ascalis lumbricoides*
- B: *Fasciola hepatica*
- C. *Taenia* Spp.
- D. *Trichuris trichiura*



Quiz : 4 WHAT IS IT?

 Please Select

- A: *Ascalis lumbricoides*
- B: *Fasciola hepatica*
- C. *Taenia* Spp.
- D. *Trichuris trichiura*



Quiz : 5 WHAT IS IT?

 Please Select

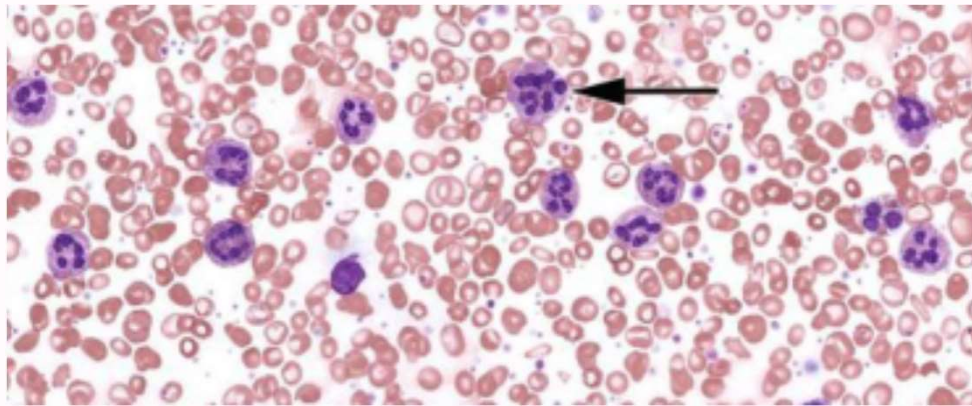
- A: Escherichia coli
- B: Fasciola hepatica
- C. Entamoeba histolytica
- D. Endolimax nana





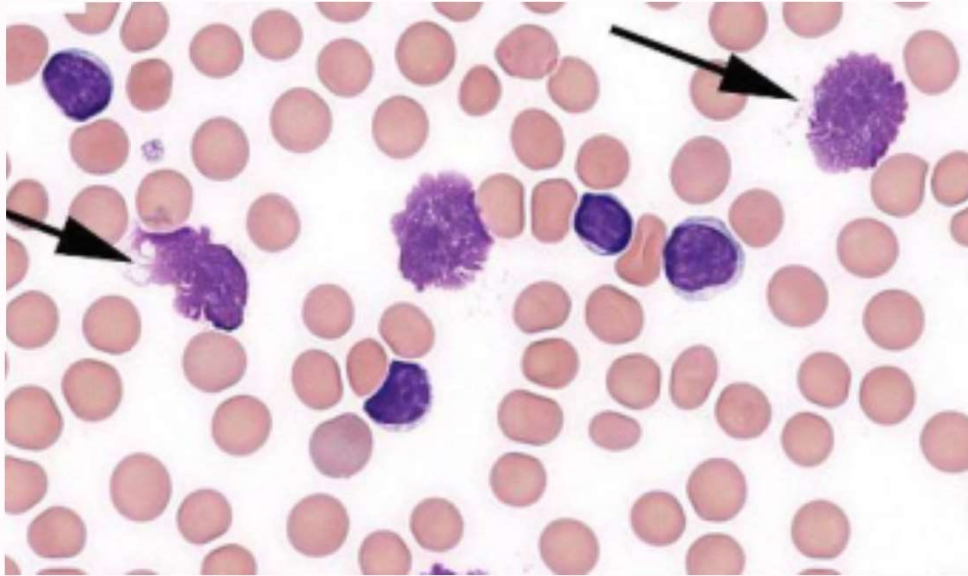
Answers

1. Neutrophil (hypersegmented)



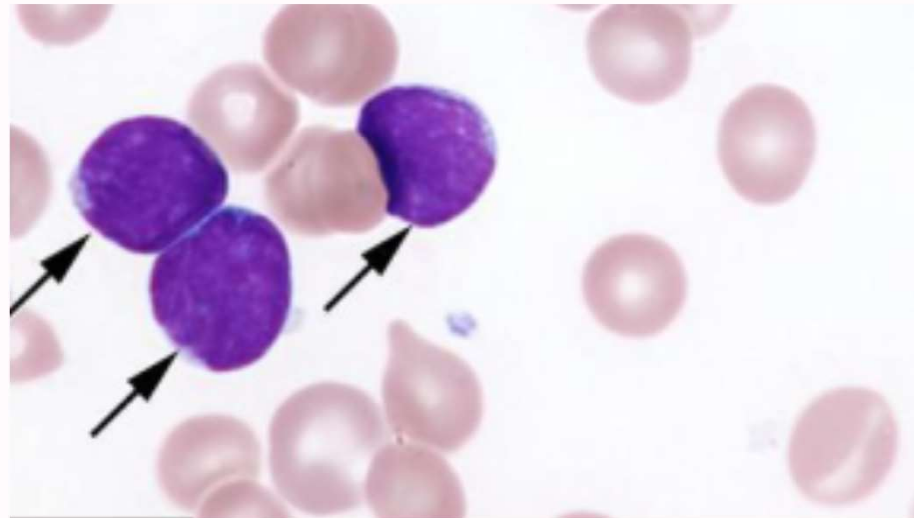
Neutrophils are hypersegmented when the nucleus contains = six lobes. A normal mature neutrophil is 9-13 microns in diameter with a nucleus made up of 3 to 5 lobes or segments.

2. Smudge cells



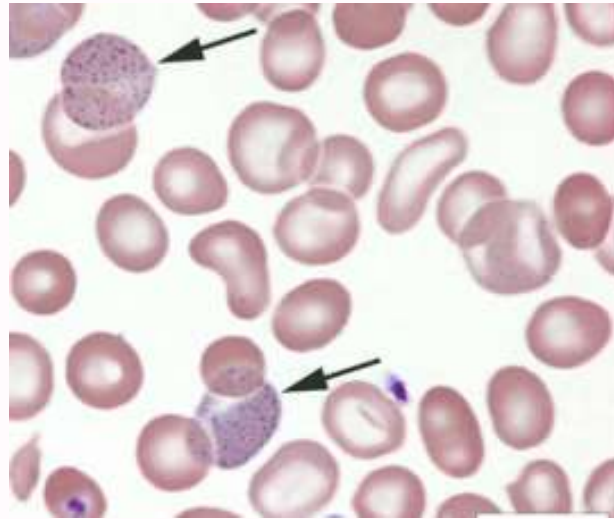
Smudge cells are degenerated cells, usually abnormal cells such as the cells of **chronic lymphocytic leukemia** (this case) and other leukemic conditions.

3. Lymphoblasts



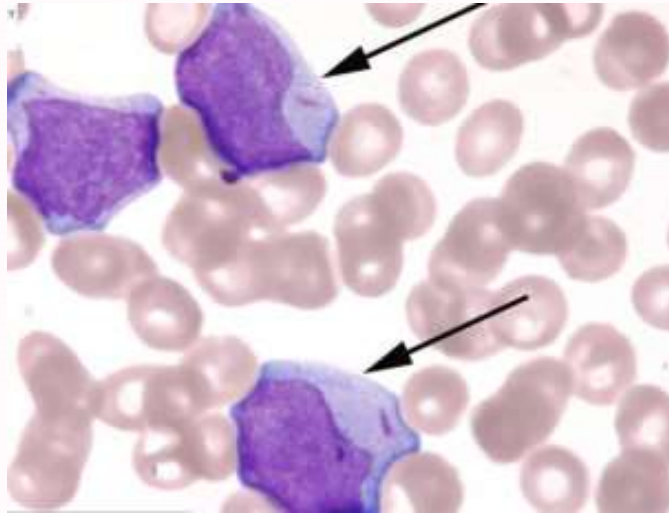
Lymphoblasts display very high nuclear:cytoplasmic ratios with immature nuclear features including open (uncondensed, lacy) chromatin typically without nucleoli

4. Basophilic Stippling



The arrows point to two red cells exhibiting coarse basophilic stippling. Coarse basophilic stippling is seen in megaloblastic anemia and other forms of severe anemias, lead poisoning, and thalassemia. Coarse basophilic stippling indicates impaired hemoglobin synthesis, probably due to the instability of RNA in the young cell

5. Myeloblasts

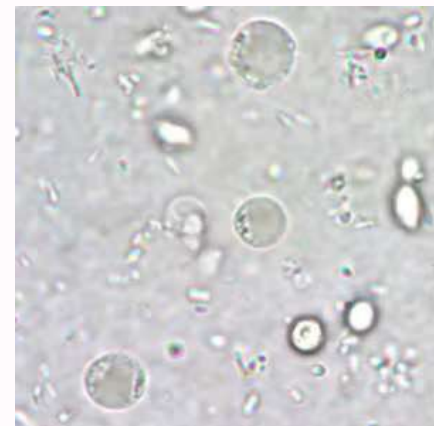
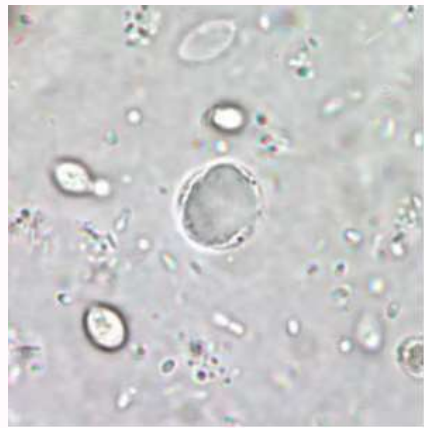


This particular myeloblast contains an Auer rod-- the red staining thin, rod-like structure present in the cytoplasm. Myeloblasts are primitive granulocytes that typically have nuclei with an "open" (immature) chromatin pattern, often with nucleoli and have scant amounts of blue-staining cytoplasm. Auer rods represent fused primary granules and are only seen in the malignant myeloid blasts of acute myeloid leukemia.



Answers

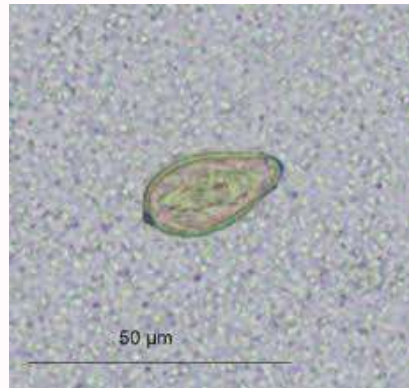
Blastocystis sp.



Blastocystis sp. in human stool specimens usually appears as spherical to oval vacuolar forms, which can vary widely in size (5 to 40 μm , occasionally much larger in culture; usual range in human stool is 8 to 10 μm) and typically consist of a central body, or “vacuole,” surrounded by a thin rim of cytoplasm containing up to six nuclei.

ปรสิตขนาดเล็กที่สามารถอาศัยอยู่ในระบบย่อยอาหาร ทำให้เกิดอาการท้องร่วงท้องเสีย

Opisthorchis spp.



Eggs of *Opisthorchis* spp. are 19-30 µm long by 10-20 µm wide and are often indistinguishable from the eggs of *Clonorchis sinensis*. The eggs are operculated and possess prominent opercular 'shoulders' and and abopercular knob. The eggs are embryonated when passed in feces.

พยาธิใบไม้ในอาหาร

ซึ่งพบได้เฉพาะในประเทศแถบเอเชีย และการติดเชื้อมักเกี่ยวข้องกับมะเร็งท่อน้ำดีและโรคตับและทางเดินน้ำดีอื่นๆ



Fasciola spp.



Eggs of *Fasciola* spp. are broadly ellipsoidal, are operculated, measure 130–150 µm long by 60–90 µm wide, and are passed unembryonated in feces.

พยาธิใบไม้ตับโค (*Fasciola* spp.) เป็นปรสิตก่อโรคที่สำคัญในโคและกระบือ

Taenia spp



The eggs of *Taenia* spp. are indistinguishable from each other, as well as from other members of the Taeniidae. The eggs measure 30-35 micrometers in diameter and are radially-striated. The internal oncosphere contains six refractile hooks.

พยาธิตัวตืดวัว (Taenia saginata) พยาธิตัวตืดหมู (Taenia solium)

Entamoeba histolytica



Mature *Entamoeba histolytica* cysts have 4 nuclei that characteristically have centrally-located karyosomes and fine, uniformly distributed peripheral chromatin. Cysts usually measure 12 to 15 μm .

พยาธิศัวกลม *Entamoeba*